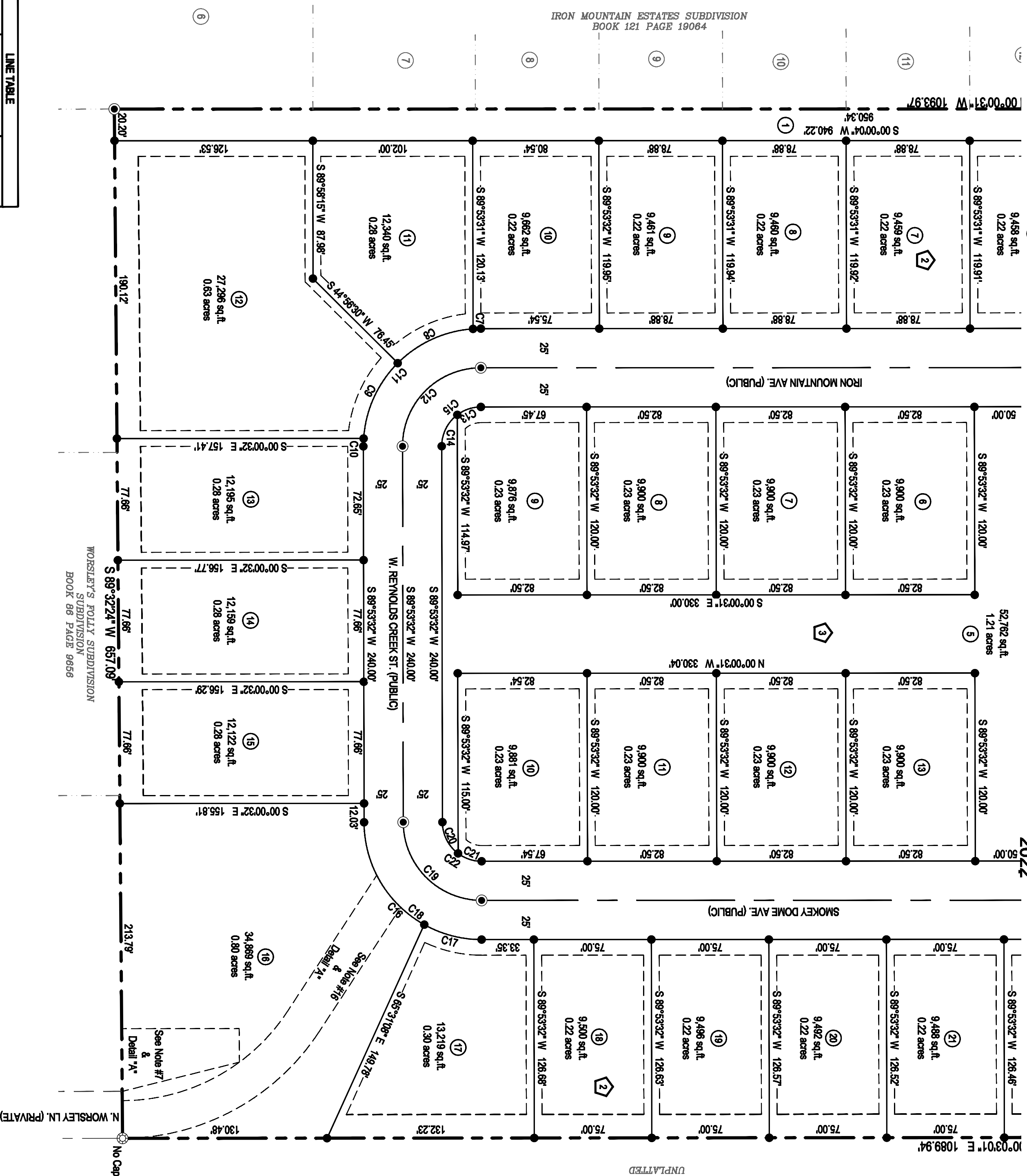


IRON MOUNTAIN VISTA SUBDIVISION

A REPLAT OF LOTS 4 & 5, BLOCK 1 OF WORSLEY'S FOLLY SUBDIVISION,
 LOCATED IN THE E1/2 NE1/4 SW1/4 OF SECTION 4,
 T. 4 N., R. 1 W., B.M., ADA COUNTY, IDAHO

2022



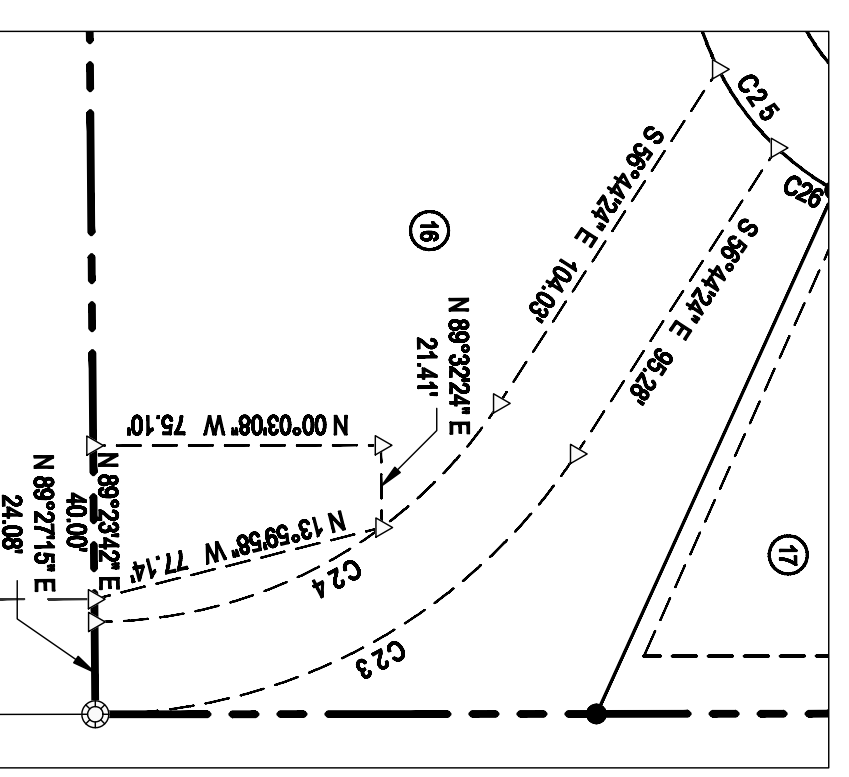
LINE	BEARING	LENGTH
L1	S 84°08'07" E	14.04
L2	S 42°04'16" E	10.28
L3	S 42°04'16" E	17.86
L4	N 45°55'53" E	16.40
L5	N 45°55'53" E	14.82
L6	S 45°01'07" E	14.14
L7	S 45°01'07" E	16.32

LEGEND

- ▲ Calculated point
- Found brass cap monument
- ⊕ Found aluminum cap monument
- Found 5/8 inch dia. iron pin
- Found 1/2 inch dia. iron pin
- Found 1/2 inch dia. x 24 inch iron pin w/ plastic cap "P.L.S 7732"
- Found 1/2 inch dia. x 24 inch iron pin w/ plastic cap "P.L.S 7732"
- Found P.K. nail or Meg nail
- Block number
- Lot number
- Boundary line
- Property line
- Section line
- Easement line
- Lot Line
- Centerline
- Private Road



CURVE	LENGTH	RADIUS	CENTRAL ANGLE	CHORD BEARING	CHORD
C1	23.14	226.00	05°53'37"	N 87°04'50" W	23.13
C2	20.57	200.00	05°53'37"	N 87°04'50" W	20.56
C3	18.00	175.00	05°53'37"	N 87°04'50" W	17.99
C4	18.00	175.00	05°53'41"	S 87°04'52" E	18.00
C5	20.98	200.00	05°53'41"	S 87°04'52" E	20.57
C6	6.89	226.00	01°40'41"	S 88°11'22" E	6.89
C7	5.00	75.00	03°48'20"	S 01°55'11" E	5.00
C8	53.96	75.00	41°13'22"	S 24°28'32" E	52.80
C9	53.96	75.00	41°13'31"	S 65°38'56" E	52.81
C10	5.01	75.00	03°48'44"	S 88°11'38" E	5.01
C11	117.94	75.00	90°03'57"	S 45°03'30" E	108.16
C12	78.63	50.00	90°06'59"	S 45°03'30" E	70.77
C13	16.13	25.00	39°58'00"	S 18°22'35" E	15.95
C14	23.18	25.00	53°07'45"	S 63°32'34" E	22.38
C15	39.31	25.00	90°06'57"	S 45°03'30" E	35.39
C16	79.47	75.00	60°42'35"	N 89°32'17" E	73.80
C17	38.21	75.00	29°11'25"	N 14°35'11" E	37.80
C18	117.88	75.00	89°54'03"	N 44°56'30" E	105.97
C19	78.45	50.00	89°54'03"	N 44°56'30" E	70.65
C20	23.13	25.00	53°01'04"	N 63°22'59" E	22.32
C21	18.09	25.00	36°32'55"	N 18°25'56" E	15.82
C22	39.23	25.00	89°54'03"	N 44°56'30" E	35.32
C23	148.39	150.31	89°33'43"	N 28°25'45" W	142.43
C24	124.84	128.00	56°46'00"	N 28°21'24" W	118.79
C25	25.87	75.00	19°39'34"	N 53°16'51" E	25.54
C26	18.71	75.00	14°17'41"	N 38°19'44" E	18.66



COMPASS LAND SURVEYING, PLLC
 623 11th Avenue South Nampa, ID 83651
 Office: (208) 442-0115
 JN 7421 01/27/2022
 SHEET 3 OF 5