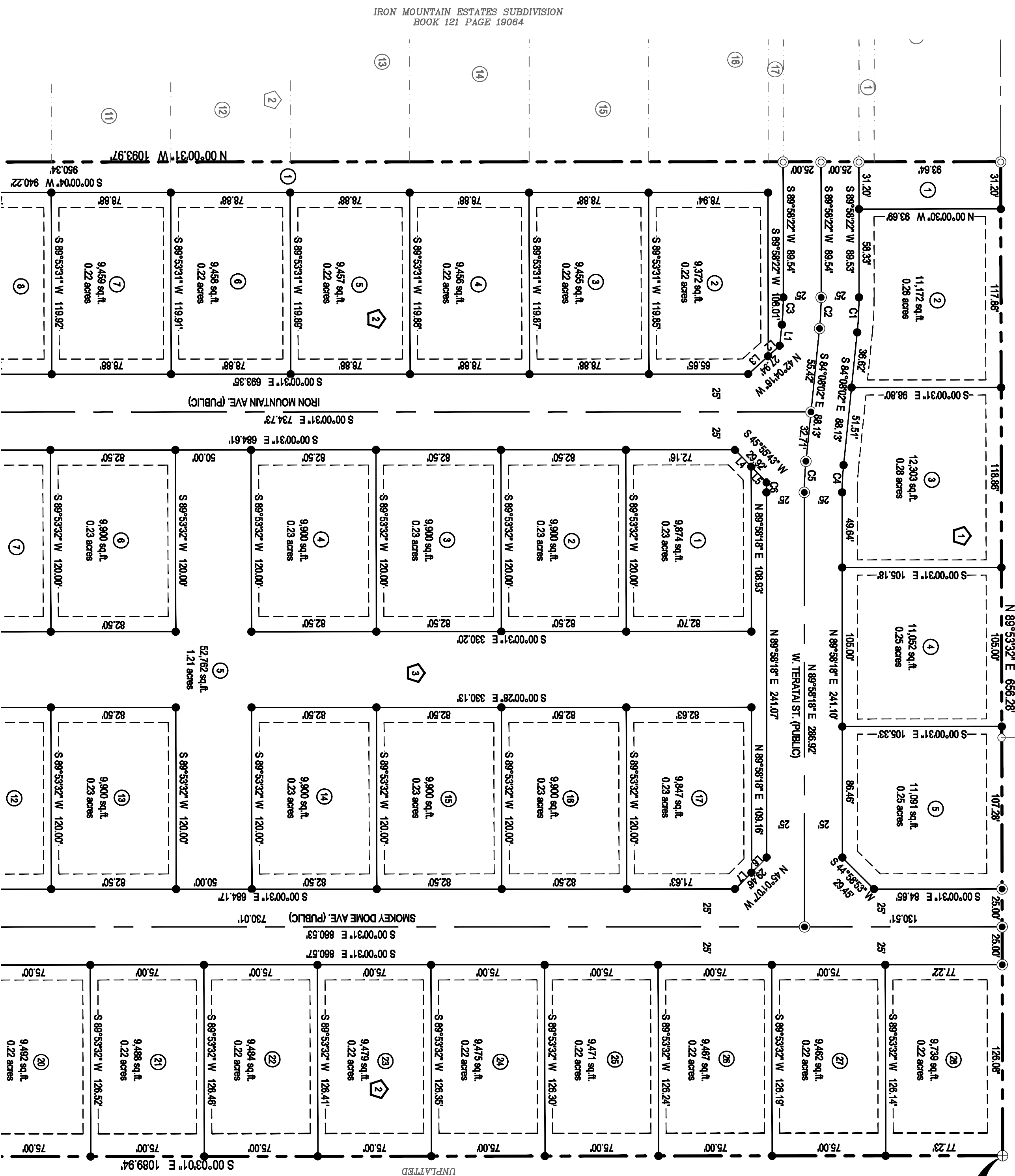


# IRON MOUNTAIN VISTA SUBDIVISION

A REPLAT OF LOTS 4 & 5, BLOCK 1 OF WORSLEY'S FOLLY SUBDIVISION,  
 LOCATED IN THE E1/2 NE1/4 SW1/4 OF SECTION 4,  
 T. 4 N., R. 1 W., B.M., ADA COUNTY, IDAHO  
 2022



### LEGEND

- ▲ Calculated point
- Found brass cap monument
- Found aluminum cap monument
- Found 5/8 inch dia. iron pin w/ plastic cap "P.L.S 7732"
- Found 1/2 inch dia. iron pin
- Found 1/2 inch dia. x 24 inch iron pin w/ plastic cap "P.L.S 7732"
- Found P.K. nail or Meg nail
- Block number
- Lot number
- Boundary line
- Property line
- Section line
- Easement line
- Lot Line
- Centerline
- Private Road



LINE	BEARING	LENGTH
L1	S 84° 08' 02" E	14.04
L2	S 42° 04' 16" E	10.28
L3	S 42° 04' 16" E	17.88
L4	N 45° 55' 43" E	15.40
L5	N 45° 55' 43" E	14.52
L6	S 45° 01' 07" E	14.14
L7	S 45° 01' 07" E	15.32

### CURVE TABLE

CURVE	LENGTH	RADIUS	CENTRAL ANGLE	CHORD BEARING	CHORD
C1	23.14	226.00	05° 53' 37"	N 87° 04' 50" W	23.13
C2	20.57	200.00	05° 53' 37"	N 87° 04' 50" W	20.56
C3	18.00	175.00	05° 53' 37"	N 87° 04' 50" W	17.99
C4	18.00	175.00	05° 53' 41"	S 87° 04' 52" E	18.00
C5	20.56	200.00	05° 53' 41"	S 87° 04' 52" E	20.57
C6	6.89	226.00	01° 40' 41"	S 88° 11' 22" E	6.89
C7	6.00	75.00	03° 48' 20"	S 01° 55' 11" E	6.00
C8	53.96	75.00	41° 13' 21"	S 24° 25' 32" E	62.80
C9	53.96	75.00	03° 48' 44"	S 88° 11' 35" E	62.81
C10	5.01	75.00	07° 05' 57"	S 45° 03' 30" E	5.01
C11	117.94	75.00	90° 05' 57"	S 45° 03' 30" E	106.18
C12	78.63	50.00	90° 05' 57"	S 45° 03' 30" E	70.77
C13	16.13	25.00	36° 56' 05"	S 18° 29' 35" E	15.86
C14	23.18	25.00	53° 07' 45"	S 63° 32' 34" E	22.38
C15	38.31	25.00	80° 05' 57"	S 45° 03' 30" E	35.39
C16	79.47	75.00	80° 42' 35"	N 59° 32' 12" E	75.80
C17	38.21	75.00	29° 11' 25"	N 14° 35' 11" E	37.80
C18	117.88	75.00	89° 54' 03"	N 44° 56' 30" E	105.97
C19	78.45	50.00	89° 54' 03"	N 44° 56' 30" E	70.65
C20	23.13	25.00	53° 01' 04"	N 63° 22' 59" E	22.32
C21	16.89	25.00	36° 52' 56"	N 18° 25' 59" E	15.82
C22	38.23	25.00	89° 54' 03"	N 44° 56' 30" E	35.32
C23	148.38	150.31	56° 33' 43"	N 28° 25' 45" W	142.43
C24	124.84	128.00	56° 46' 00"	N 28° 21' 28" W	119.78
C25	25.67	75.00	18° 36' 34"	N 53° 16' 51" E	25.54
C26	18.71	75.00	14° 17' 41"	N 38° 19' 44" E	18.68



**COMPASS LAND SURVEYING, PLLC**  
 623 11th Avenue South Nampa, ID 83651  
 Office: (208) 442-0115  
 JN 7/21 SHEET 2 OF 5 01/27/2022